

## StrongFloat range

### FLOAT YOUR PIPE

#### StrongFloats

DredgingCase present you StrongFloats, our modular PE floatation system which is, because of its unique features and well known reliability, used by dredging companies all over the world. StrongFloats consist of two half cylinders, coming with stainless steel or hot dip galvanised assembly material. They are corrosion free, low maintenance and available for pipe diameters from 70 to 1.600 mm.

#### StrongFloat Design

All our floats are designed with help of the Finite Element Method (FEM), which will always lead to the maximum performance form material and shape.

#### StrongFloat Production

We are proud to be able to produce exactly according to each clients' unique wishes. Because our production facility is in The Netherlands we have the ultimate control on quality as well as on planning. As a (prospective) client you always have the possibility to visit our facility during the production of your floating device. We produce floats with a maximum length to 5.000 mm with a wide of 3.000 mm

#### StrongFloat foam filled

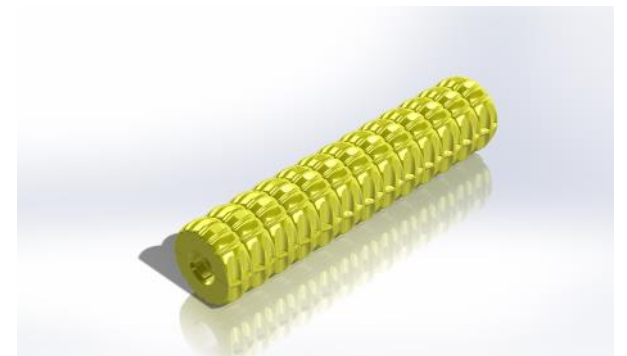
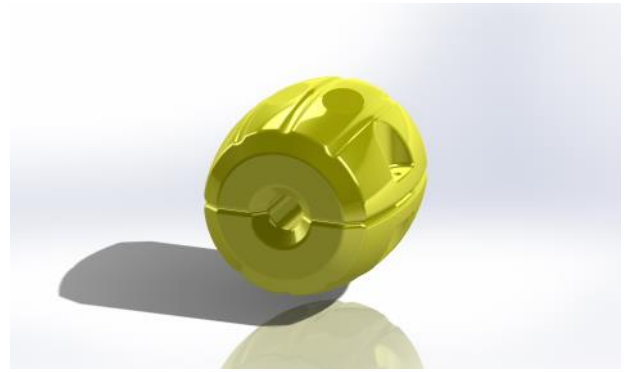
If necessary we can also deliver your StrongFloats filled with foam. You can choose between standard PU foam or, even better, expanded polystyrene. Our expanded polystyrene is more or less flexible, 100% closed cell and fully recyclable.



# StrongFloat Range

Some examples / Main dimensions

STRONGFLOAT		
Type strong float	Dimensions OD X ID X L (mm)	Buoyancy approx (KG)
XXS 70	400 x 70 x 400	40
XXS 125	400 x 125 x 400	38
XXS 140	400 x 140 x 400	36
XXS 160	400 x 160 x 400	34
<hr/>		
XS 180	600 x 180 x 800	128
XS 200	600 x 200 x 800	125
XS 225	600 x 225 x 800	123
<hr/>		
S 225	700 x 225 x 800	243
S 250	700 x 250 x 800	237
S 280	700 x 280 x 800	228
<hr/>		
M 315	850 x 315 x 800	290
M 355	850 x 355 x 800	280
<hr/>		
L 400	1350 x 400 x 700	710
L 450	1350 x 450 x 700	690
<hr/>		
XL 500	1540 x 500 x 700	985
XL 560	1540 x 560 x 700	955
XL 630	1540 x 630 x 700	915
XL 710	1540 x 710 x 700	850
<hr/>		
XL 680 XL	1550 x 680 x 1800	2200
<hr/>		
XXL 710	2100 x 710 x 700	1800
XXL 850	2100 x 850 x 700	1740
XXL 950	2100 x 950 x 700	1675
XXL 1050	2100 x 1050 x 700	1600



## RELATED DREDGINGCASE PRODUCTS:



**StrongHose**



**StrongPipe HDPE**



**StrongPU**



**StrongPipe Steel**



Nijverheidsstraat 1a  
NL-4283 GW GIESSEN  
The Netherlands

Phone : +31 (0)6 46 05 09 80  
Web : [www.dredgingcase.nl](http://www.dredgingcase.nl)  
E-Mail : [info@dredgingcase.nl](mailto:info@dredgingcase.nl)

All our quotations, all orders placed with us and all contracts concluded with us, are subject to the METAALUNIE CONDITIONS, as they read according to the text printed on the back. These conditions are filed with the registrar of the District Court of Rotterdam. Upon request, the conditions of delivery and payment will be sent to you for free as well.